

Winter 2018

Newsletter



**Aboriginal
Sobriety
Group**
INDIGENOUS CORPORATION



Back: Ramla Molligoda (Finance) James Aulich (LTW) Don Scordo (Riverland) Ian Sansbury (Substance Misuse Team) Jason Warrior (Homelessness) Paul Fitzgerald (MAP)

Front: Evelyn Riessen (Arkaringa House) Joe Silvestri (CEO) Robyn Lines (House of Hope) Bianca Kreft (Corporate Services)

MEET OUR LEADERSHIP TEAM



Ian Sansbury



Jason Warrior



Paul Fitzgerald

ASG are proud to announce three new Program Manager appointments

Ian Sansbury has been appointed as the Substance Misuse Team Program Manager coming over from the Homelessness Services Program Manager position.

Jason Warrior is the new Western Homelessness Program Manager after a period as caseworker at Western Homelessness.

Paul Fitzgerald steps into the MAP Adelaide Program Manager position previously working as a MAP Field Worker.

We extend our congratulations to all three and are excited to have them on board.



Representatives from The Department of Prime Minister and Cabinet visited LTW and House of Hope recently.



Kenny Sumner Jnr recently celebrated a significant milestone at ASG.

He has been part of the ASG team for the last 10 years. This has all been with the Adelaide Mobile Assistance Patrol (MAP)

Congratulations Kenny! Your hard work and commitment is greatly appreciated by all.

R.I.P

CELINA JOY ARKARINGA

1973 - 2018



Celina Joy Arkaringa was a client of ASG for the past 4 years but unfortunately due to ongoing health issues passed away earlier this month at the Arkaringa House of a cardiac arrest.

Celina became a client of ASG in early 2014 where she was referred into our Western Adelaide Aboriginal Homelessness Program and was accommodated at the Annie Koolmatrie House in Woodville Gardens. Celina was referred by the Exceptional Needs Unit ENU and her stay was supposed to be an initial 3 months, however, due to Celina not being suitable for many other services and other services not allowing her back due to previous behaviours Celina remained at AKH. Celina stayed at AKH for the next 3 years and during this time she was support and case managed by MIND Australia (Mental Health Service) where they would pick her up at 9:00am every weekday morning and bring her back to AKH at 12:00pm. During this 3 hours the MIND worker would take her to collect her Methadone from Gordons Pharmacy, attend medical appointments, take her shopping, banking etc.

This was a difficult time for staff back then because we did not have the workers and structure we do now. Celina was case managed by the Homelessness case worker whom found daily tasks with Celina extremely difficult and challenging. ENU was always very supportive and through our many meetings and case conferences made a decision to fund an extra worker from 4:00pm to 12:00am a couple days a week. Over the years ENU were able to fund ASG around the clock staffing which over time made it easier for staff, but even though we had staffing 24/7 Celina was still able to get a hold of drugs, abscond and cause chaos. But looking back over the last 4 years I wouldn't change a thing because that was Celia and that was her journey.

ASG, Disability SA and ENU decided 3 years ago that ASG could start their own program for clients similar to Celina's situation, an ATSI's Women's Disability Supported Accommodation Service for Aboriginal Women with a Forensic and Mental health background. It was a long and tedious process but 12 months ago we opened up the house in Ottoway and 9 months ago after approval from Celina and ASG's Board we name the house "Arkaringa House"

Celina Joy Arkaringa has left a legacy and will be remembered forever and when people ask about Arkaringa House, ASG staff can tell the story of Celina Joy Arkaringa.

We will always remember you Celina and you will be in our hearts forever.

Love always and Forever

From Everyone at the Aboriginal Sobriety Group

Goodbye for now our "Little Buttercup"

RIVERLAND MENTAL HEALTH CARE PROGRAM

The Riverland Aboriginal Mental Health Care Program contributes to the conveyance of culturally appropriate targeted programs and supports with the aim of promoting positive mental health and social and emotional wellbeing for Aboriginal community members.

This includes:

- Support access to high quality culturally appropriate health services
 - Bi-monthly Ngangkari (Traditional Healers) Clinics
 - Psychology
 - Community Education
- A stepped care approach promotes person centred care which targets the needs of the individual.

Riverland Aboriginal Mental
Health Care Program
3 Wilson Street Berri SA 5343
Phone: 8580 8700

phn
COUNTRY SA

An Australian Government Initiative



Cross Fit in The Riverland

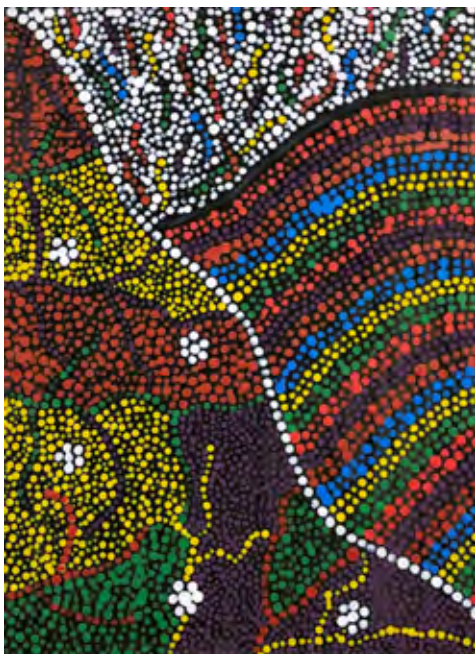


RECENT GRADUATIONS AT LTW

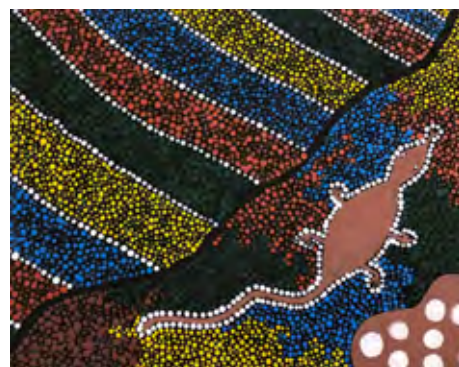
Newsletter enquiries to dons@asq.org.au

www.asq.org.au

Winter 2018



Some deadly artwork
by clients at our
Aboriginal Female
Rehabilitation Centre,
House of Hope





Aboriginal Sobriety Group

INDIGENOUS CORPORATION

182-190 Wakefield Street, Adelaide SA 5000 | PO Box 7306
Hutt Street, Adelaide SA 5000 | Phone: (08) 8223 4204

YOUR FEEDBACK IS IMPORTANT TO US:

If you have any questions, ideas or suggestions regarding this newsletter, please contact Don Scordo on 8580 8700 or

Email dons@asg.org.au

Website www.asg.org.au



Newsletter enquiries to dons@asg.org.au

www.asg.org.au

Winter 2018